

# ■ Center for Biofilm Engineering

02/04/2013

## Monday February 4

6:00–8:30 p.m.  
**Pre-registration and welcome reception**  
Hilton Garden Inn, Bozeman

## Tuesday February 5

7:30–8:00 a.m.  
**Registration and continental breakfast**  
Hilton Garden Inn—Larkspur Foyer

8:00–8:10  
**Introductory remarks**  
Larkspur Ballroom  
Paul Sturman, CBE Industrial Coordinator  
Tony Rook, IA Chair,  
The Sherwin-Williams Company  
Phil Stewart, CBE Director

### SESSION 1: Skin Biofilms

8:10–8:15  
**Session introduction**  
Garth James, CBE Medical Projects Manager; Associate Research Professor, Chemical & Biological Engineering, MSU

8:15–8:45  
**Biofilm in comedonal and inflammatory *Acne vulgaris*: In vivo identification and characterization**  
Manisha Patel, MD, Assistant Professor, Dermatology, School of Medicine, Johns Hopkins University

8:45–9:15  
**Imaging biofilms in tissue**  
Garth James

9:15–9:45  
**Study of the human skin microbiome using metagenomic and genomic approaches**  
Huiying Li, Assistant Professor, Molecular & Medical Pharmacology, University of California, Los Angeles

### 9:45–10:15 Break

### SESSION 2: Industrial Biofilms

10:15–10:20  
**Session introduction**  
Paul Sturman

10:20–10:50  
**Manganese sulfide inclusions and pit initiation in carbon steel during microbially influenced corrosion: Pits initiate in the immediate surroundings of the inclusions**  
Recep Avci, Director, Imaging & Chemical Analysis Laboratory (ICAL), Research Professor, Physics, MSU

10:50–11:20  
**Characterization of *Desulfovibrio alaskensis* G20 physiology and biofilm metabolism on glass and steel surfaces**  
Greg Krantz, PhD student, Microbiology, CBE

11:20–11:45  
**Development and implementation of a new treatment for biofilm remediation in industrial systems**  
Adrian Denvir, Manager, Water Treatment Science and Technology, NCH Corporation

11:45–12:15  
**Systems-based analysis of industrially relevant microbes**  
Ross Carlson, Associate Professor, Chemical & Biological Engineering, CBE  
Abbie Richards, Assistant Professor, Chemical & Biological Engineering, CBE

12:15–1:10  
**Catered lunch—Hilton Garden Inn**

1:10–1:15  
**Presentation of student awards**  
Nancy Characklis & Phil Stewart

### SESSION 3: Environmental/Mineral Biofilms

1:15–1:25  
**Session introduction**  
Brent Peyton, Professor, Chemical & Biological Engineering, CBE; Associate Director, Thermal Biology Institute, MSU

1:25–1:50  
**Microbial ecology of mine waste environments**  
Lisa Kirk, Research Scientist, CBE

1:50–2:15  
**Why the mining industry needs microbiologists**  
Chris Kennedy, Senior Consultant, SRK Consulting

2:15–2:40  
**Planktonic and biofilm community dynamics in situ**  
Kara De León, PhD student, Microbiology, CBE

### Special Presentations:

2:40–3:05  
**2012 ASM Biofilms meeting digest**  
Phil Stewart

3:05–3:15  
**Update: Biofilm methods index**  
Darla Goeres, Assistant Research Professor, Chemical & Biological Engineering, CBE

**Darla Goeres describes the Single Tube Method in this short video:**  
<http://youtu.be/37VDD3JiJiQ>

### Laboratory open house and poster session

3:30–5:00  
CBE Laboratories, 3rd Floor EPS Building

# Wednesday February 6

---

7:30–8:00 a.m.  
**Registration and continental  
breakfast**  
Hilton Garden Inn—Larkspur Foyer

## SESSION 4: Pathogen Persistence in Biofilms

8:00–8:25  
**Session introduction/overview:  
Pathogen persistence in biofilms**  
Anne Camper, Associate Dean,  
College of Engineering, Professor,  
Civil Engineering, CBE

8:25–8:55  
**Root associated biofilms: Physical  
gradients and nutrient cycling**  
Chris Allen, PhD student, Civil  
Engineering, CBE

8:55–9:25  
**Pathogen-biofilm-root  
interactions for common  
constructed wetland plants**  
Rachel VanKempfen-Fryling, PhD  
student, Microbiology, CBE

9:25–9:55 **Break**

## SESSION 5: Next Generation Biomaterials

9:55–10:05  
**Session introduction**  
Phil Stewart

10:05–10:35  
**A porous biomaterial approach to  
biofilm infection control**  
Andrew Marshall, Director & Chief  
Technology Officer, Healionics

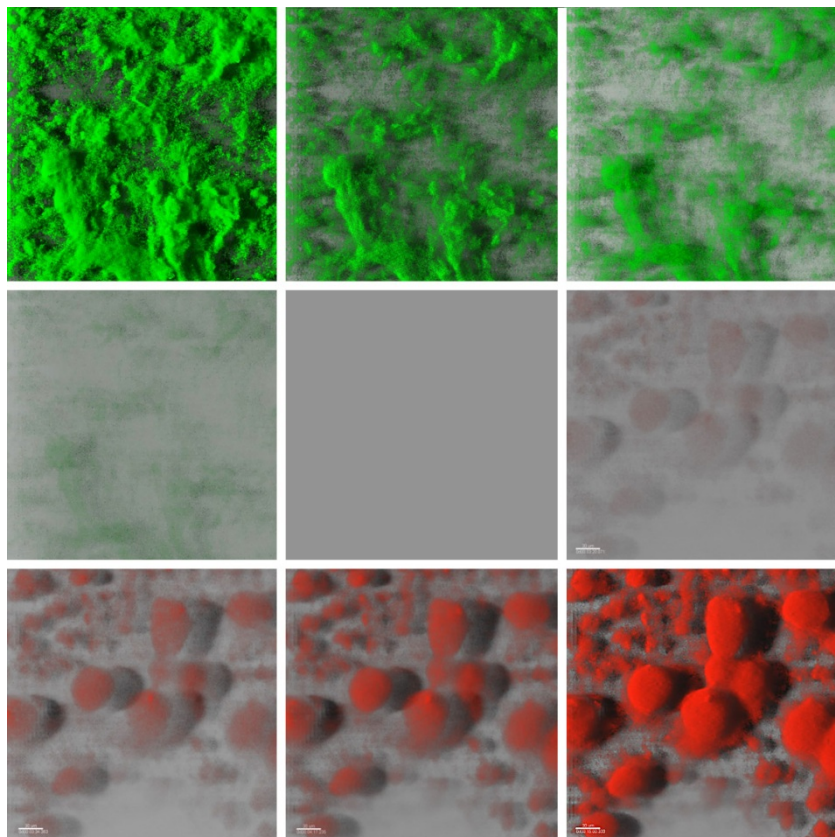
10:35–11:05  
**Bioinspired slippery surfaces  
with robust and persistent  
anti-biofouling performance**  
Ben Hatton, Assistant Professor,  
Materials Science & Engineering,  
University of Toronto

11:05–11:35  
**In vivo analysis of a novel  
antimicrobial coating to prevent  
biofilm implant-related infection**  
Dustin Williams, Postdoctoral  
Fellow, Department of  
Orthopaedics, University of Utah

11:35–12:05  
**Inhibiting bacterial biofilm  
formation on stainless steel 316L  
using self-assembled monolayers**  
Kristen Kruszewski, Research  
Chemist, PPG Industries

12:05–12:15  
**Meeting Wrap-up**

See you at the  
**NEXT MEETING:**  
**July 16–18, 2013**



Time lapse screenshots  
obtained from the  
CBE's newly developed  
Treatment Flow Cell,  
designed to image  
antibacterial treat-  
ments on live biofilms.  
Imaging by B Pitts & L  
Lorenz.